



Birchfield Road East

Abington, Northampton

oriordanbond
SALES & LETTINGS



Birchfield Road East

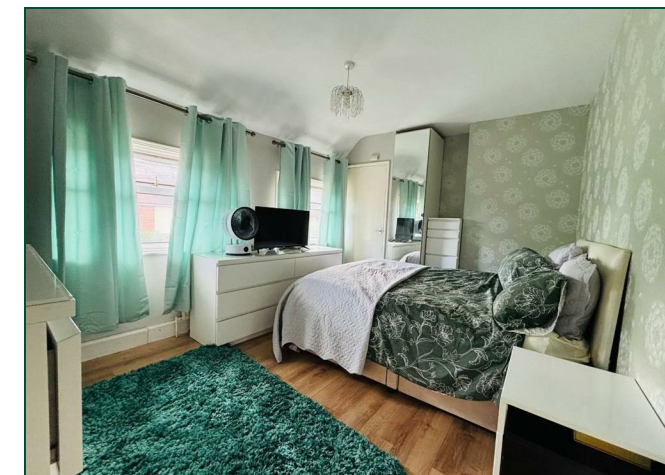
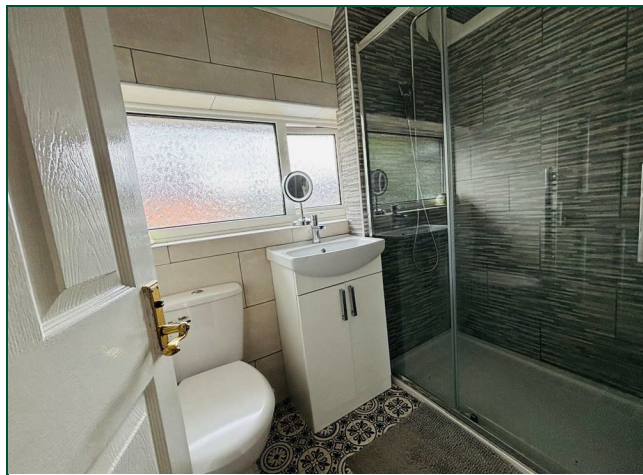
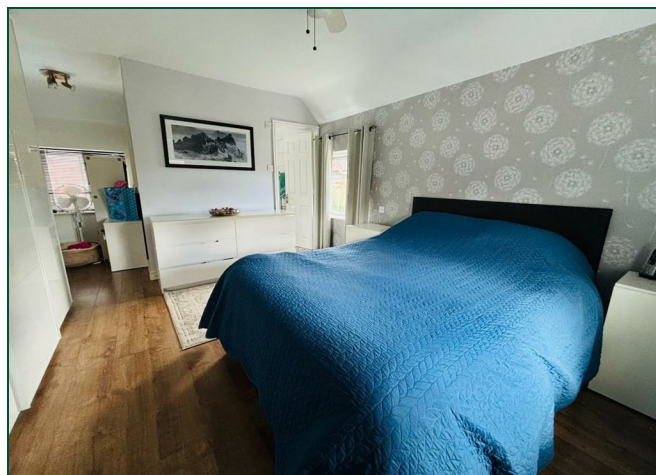
Abington
NN3 2SN

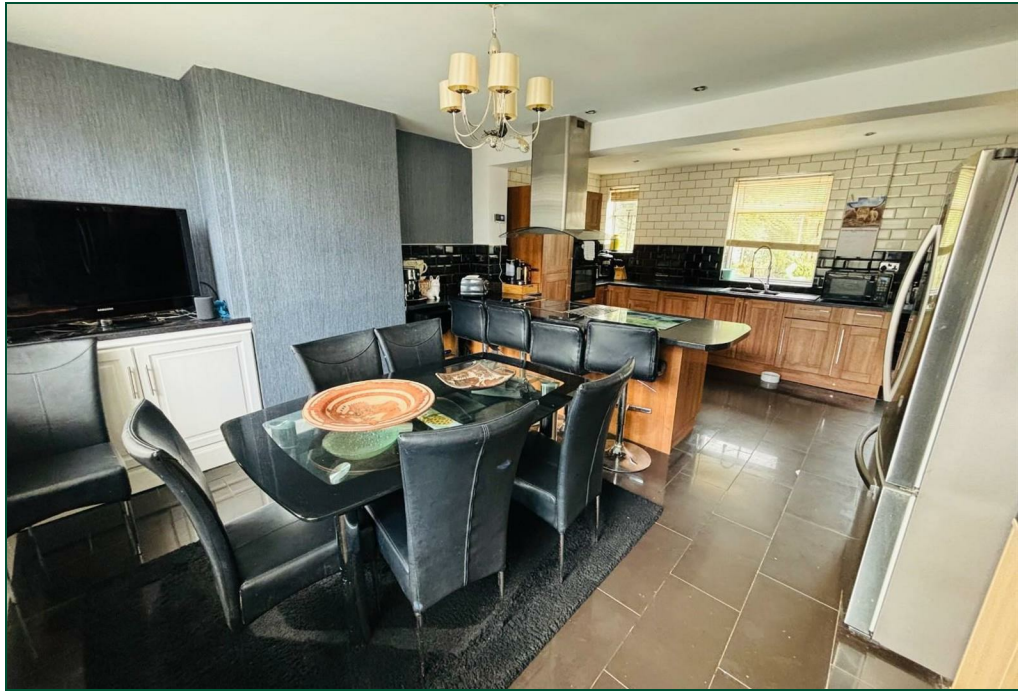
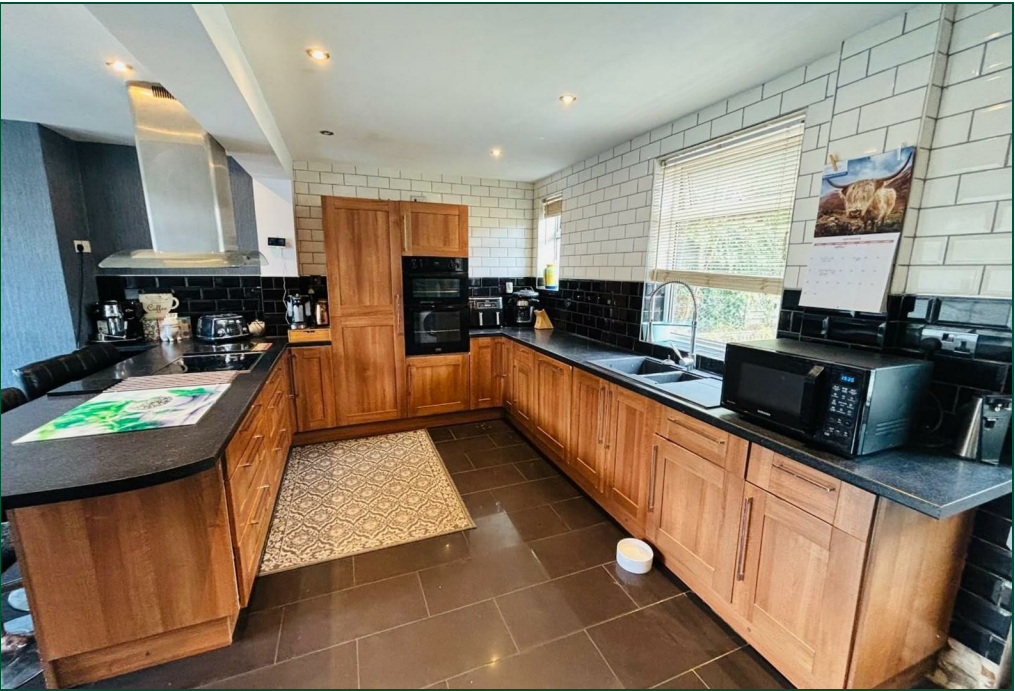
Guide Price
£280,000

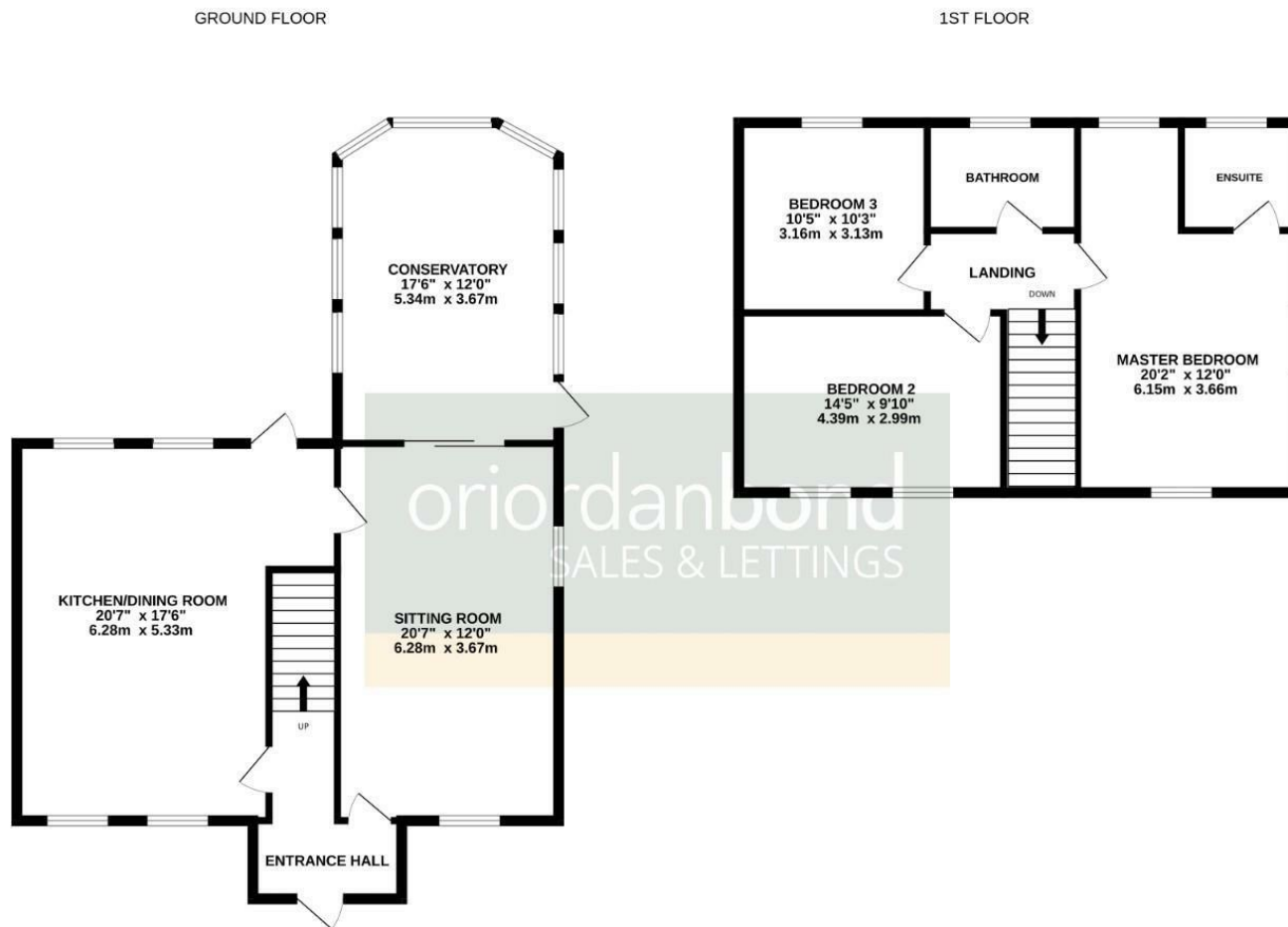
O'Riordan Bond is delighted to offer for sale this impressive and substantially extended three bedroom end terraced property situated on a corner plot. The property provides good access to local amenities and Abington Park.

The accommodation comprises entrance hall, 20' sitting room, large conservatory, spacious re-fitted open plan kitchen/dining room, a family shower room and three double bedrooms with a full en-suite bathroom to the master. Outside are enclosed gardens to the front and the rear. Further benefits include gas radiator heating and uPVC double glazing. (B/1462/M)

- Extended three bedroom end terraced house
- Spacious re-fitted open plan kitchen/dining room
- Large conservatory
- Shower room
- Gas radiator heating
- Enclosed rear garden







TOTAL FLOOR AREA : 1462 sq.ft. (135.8 sq.m.) approx.

Whilst every attempt has been made to ensure the accuracy of the floorplan contained here, measurements of doors, windows, rooms and any other items are approximate and no responsibility is taken for any error, omission or mis-statement. This plan is for illustrative purposes only and should be used as such by any prospective purchaser. The services, systems and appliances shown have not been tested and no guarantee as to their operability or efficiency can be given.
Made with Metropix ©2025



Additional information

- Council Tax Band: A
- Energy Efficiency Rating: C

Viewing

Viewing strictly by appointment – details below

Disclaimer

O'Riordan Bond Estate Agents Limited has not tested apparatus, equipment, fittings or services and so cannot verify they are in working order. The buyer is advised to obtain verification from their solicitor or surveyor.

O'Riordan Bond Abington East Sales
01604 639007

abingtoneast@oriordanbond.co.uk

